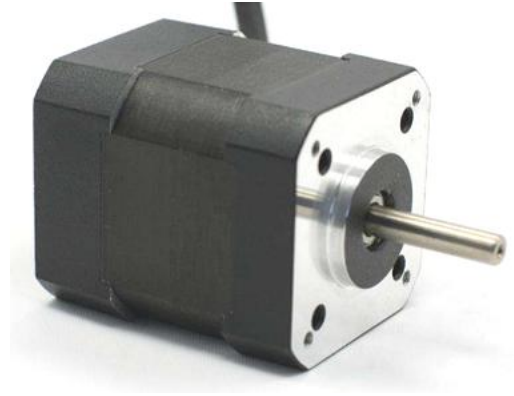


42mm-1 系列永磁直流无刷电动机

42mm Brushless Dc Motor

使用环境 (Environmental conditions)	-20°C ~ 50°C
磁钢材料(Magnet material)	粘结钕铁硼(Bonder NdfeB)
极数/相数(Number of poles/phase)	8/3
绝缘等级 (Insulation class)	Class B
绝缘电阻 (Insulation resistance)	100MΩmin 500VDC

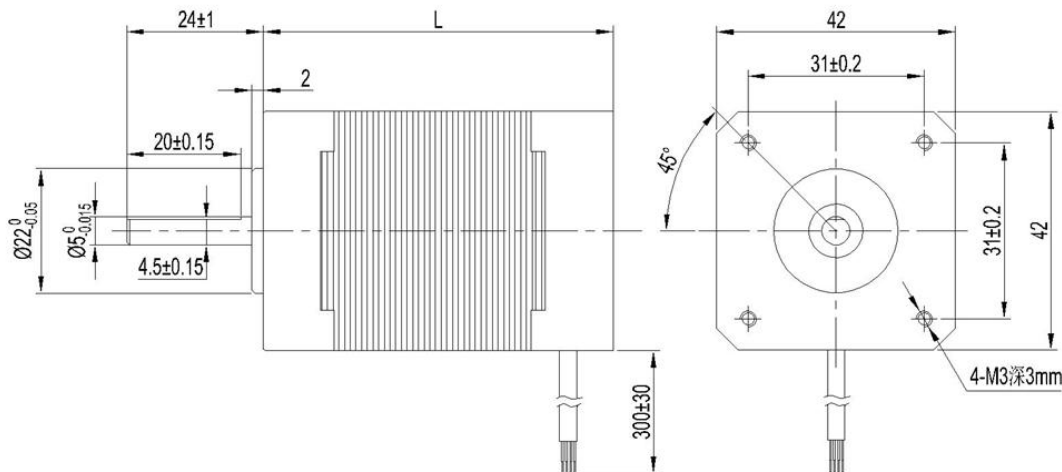


技术参数(Electrical Specifications):

型号 (Model)		42BL40-240-1	42BL60-240-1	42BL80-24-1	42BL100-24-1
极数 (Number of Phases)		8			
电压(voltage)	VDC	24			
额定转速(Rated speed)	rpm	4000			
额定转矩(Rated torque)	N.m	0.063	0.125	0.185	0.25
额定电流(Rated current)	Amps.	1.8	3.5	5.2	6.6
额定功率(Rated power)	Watt.	27	52	78	105
峰值扭矩 (Max torque)	N.m	0.185	0.38	0.55	0.75
转矩常数(Torque constant)	N.m/Amps.	0.035	0.036	0.036	0.037
反电势常数(Back EMF)	V/Krpm	2.45	2.71	2.74	2.63
转子惯量(Rotor inertia)	kg.mm ²	2.4	4.8	7.2	9.6
机身长 L	mm	40	60	80	100
重量(Weight)	Kg	0.33	0.45	0.65	0.8

*以上仅为代表性产品，派生产品可根据客户要求制作电气参数、机械尺寸等!

Dimensions(外形图):unit=mm



Wiring Diagram(接线图定义)

电机相线(粗) Phase Line			霍尔电源(细) Hall Pw.		霍尔信号(细) Hall signal		
U	V	W	H+ (Vcc)	H- (Gnd)	Hu	Hv	Hw

黄(YEL)	绿(GRN)	蓝(BLU)	红(RED)	黑(BLK)	黄(YEL)	绿(GRN)	蓝(BLU)
--------	--------	--------	--------	--------	--------	--------	--------

42mm-2 系列永磁直流无刷电动机

42mm Brushless Dc Motor

使用环境 (Environmental conditions)	-20°C ~ 50°C
磁钢材料(Magnet material)	粘结钕铁硼(Bonder NdfеB)
极数/相数(Number of poles/phase)	8/3
绝缘等级 (Insulation class)	Class B
绝缘电阻 (Insulation resistance)	100MΩmin 500VDC

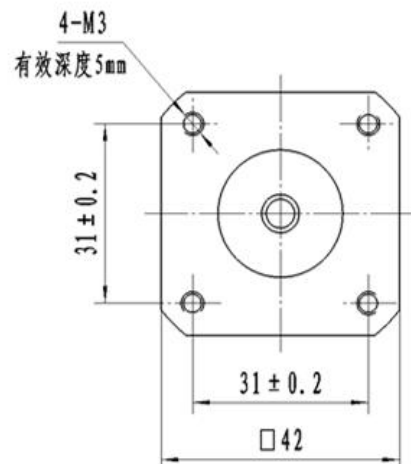
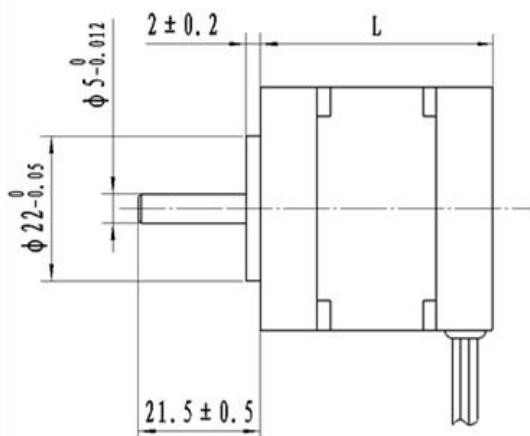


技术参数(Electrical Specifications):

型号 (Model)		42BL40-240-2	42BL60-240-2	42BL80-240-2
极数 (Number of Phases)		8		
电压(voltage)	VDC	24		
额定转速(Rated speed)	rpm	4000		
额定转矩(Rated torque)	N.m	0.063	0.125	0.185
额定电流(Rated current)	Amps.	1.8	3.5	5.2
额定功率(Rated power)	Watt.	27	52	78
峰值转矩 (Max torque)	N.m	0.185	0.38	0.55
转矩常数(Torque constant)	N.m/Amps.	0.035	0.041	0.042
反电势常数(Back EMF)	V/Krpm	3.17	3.13	3.28
转子惯量(Rotor inertia)	kg.mm ²	5.2	9.3	13.4
机身长 L	mm	40	60	80
重量(Weight)	Kg	0.3	0.47	0.65

*以上仅为代表性产品，派生产品可根据客户要求制作电气参数、机械尺寸等!

Dimensions(外形图):unit=mm



Wiring Diagram(接线图定义)

电机相线(粗) Phase Line			霍尔电源(细) Hall Pw.		霍尔信号(细) Hall signal		
U	V	W	H+ (Vcc)	H- (Gnd)	Hu	Hv	Hw
红(RED)	黄(YEL)	黑(BLK)	红(RED)	黑(BLK)	蓝(BLU)	绿(GRN)	黄(YEL)

42mm-3 系列永磁直流无刷电动机

42mm Brushless Dc Motor

使用环境 (Environmental conditions)	-20°C ~ 50°C
磁钢材料 (Magnet material)	烧结钕铁(Sintered NdFeB)
极数/相数 (Number of poles/phase)	8/3
绝缘等级 (Insulation class)	Class B
绝缘电阻 (Insulation resistance)	100MΩmin 500VDC

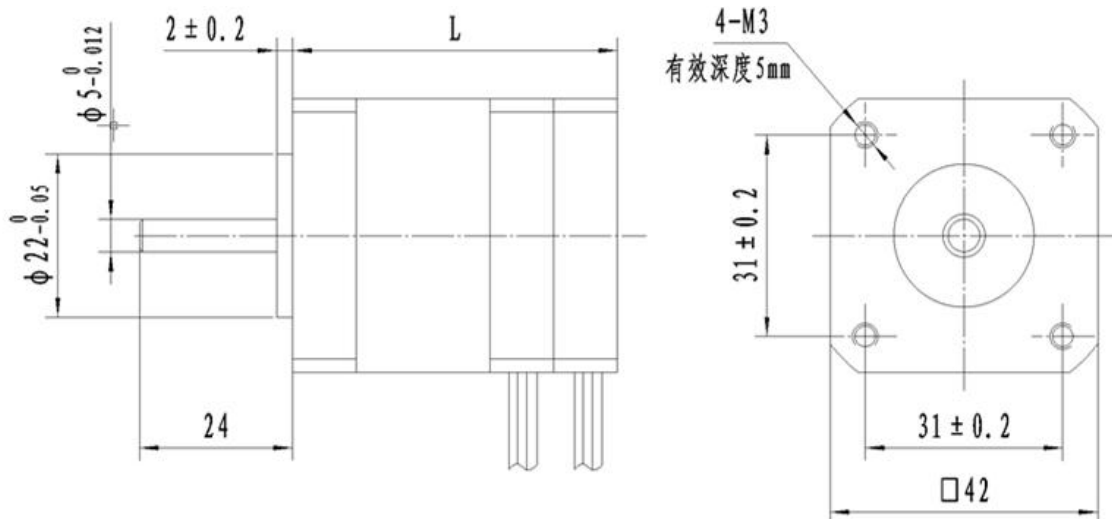


技术参数(Electrical Specifications):

型号 (Model)		42BL50S-230-3	42BL69S-230-3	42BL89S-230-3
极数 (Number of Phases)		8		
电压 (voltage)	VDC	24		
额定转速 (Rated speed)	rpm	3000		
额定转矩 (Rated torque)	N.m	0.1	0.2	0.3
额定电流 (Rated current)	Amps.	1.8	3.4	5.2
额定功率 (Rated power)	Watt.	32	63	95
峰值转矩 (Max torque)	N.m	0.3	0.6	0.9
转矩常数 (Torque constant)	N.m/Amps.	0.035	0.041	0.042
反电势常数 (Back EMF)	V/Krpm	4.2	4.2	4.3
转子惯量 (Rotor inertia)	kg.mm ²	2.9	5.9	8.9
机身長 L	mm	50	69	89
重量 (Weight)	Kg	0.35	0.55	0.75

*以上仅为代表性产品，派生产品可根据客户要求制作电气参数、机械尺寸等!

Dimensions(外形图):unit=mm



Wiring Diagram(接线图定义)

电机相线(粗) Phase Line			霍尔电源(细) Hall Pw.		霍尔信号(细) Hall signal		
U	V	W	H+ (Vcc)	H- (Gnd)	Hu	Hv	Hw
黄(YEL)	绿(GRN)	蓝(BLU)	红(RED)	黑(BLK)	黄(YEL)	绿(GRN)	蓝(BLU)

42mm-4 系列永磁直流无刷电动机

42mm Brushless Dc Motor

使用环境 (Environmental conditions)	-20°C ~ 50°C
磁钢材料(Magnet material)	粘结钕铁硼(Bonder NdfеB)
极数/相数(Number of poles/phase)	8/3
绝缘等级 (Insulation class)	Class B
绝缘电阻 (Insulation resistance)	100MΩmin 500VDC

技术参数(Electrical Specifications):

型号 (Model)		42BL 圆		
极数 (Number of Phases)				
电压(voltage)	VDC			
额定转速(Rated speed)	rpm			
额定转矩(Rated torque)	N.m			
额定电流(Rated current)	Amps.			
额定功率(Rated power)	Watt.			
峰值转矩 (Max torque)	N.m			
转矩常数(Torque constant)	N.m/Amps.			
反电势常数(Back EMF)	V/Krpm			
转子惯量(Rotor inertia)	kg.mm ²			
机身長 L	mm			
重量(Weight)	Kg			

*以上仅为代表性产品，派生产品可根据客户要求制作电气参数、机械尺寸等!

Dimensions(外形图):unit=mm

Wiring Diagram(接线图定义)

电机相线(粗) Phase Line			霍尔电源(细) Hall Pw.		霍尔信号(细) Hall signal		
U	V	W	H+ (Vcc)	H- (Gnd)	Hu	Hv	Hw
黄(YEL)	绿(GRN)	蓝(BLU)	红(RED)	黑(BLK)	黄(YEL)	绿(GRN)	蓝(BLU)

57mm-1 系列永磁直流无刷电动机

57mm Brushless Dc Motor

使用环境 (Environmental conditions)	-20°C ~ 50°C
磁钢材料(Magnet material)	粘结钕铁硼(Bonder NdfeB)
极数/相数(Number of poles/phase)	4/3
绝缘等级 (Insulation class)	Class B
绝缘电阻 (Insulation resistance)	100MΩmin 500VDC

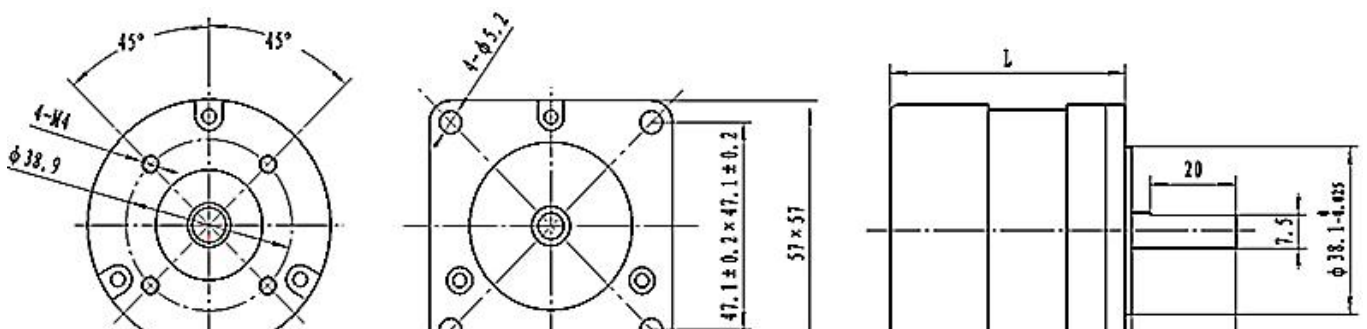


技术参数(Electrical Specifications):

型号 (Model)		57BL55-230-1	57BL75-230-1	57BL95-230-1	57BL115-230-1
极数 (Number of Phases)		4			
电压(voltage)	VDC	24			
额定转速(Rated speed)	rpm	3000			
额定转矩(Rated torque)	N.m	0.11	0.22	0.33	0.44
额定电流(Rated current)	Amps.	2.4	4.8	6.6	8.6
额定功率(Rated power)	Watt.	35	70	105	140
峰值转矩 (Max torque)	N.m	0.33	0.66	0.99	1.32
转矩常数(Torque constant)	N.m/Amps.	0.06	0.06	0.063	0.063
反电势常数(Back EMF)	V/Krpm	4.22	4.27	4.27	4.29
转子惯量(Rotor inertia)	kg.mm ²	7.5	11.9	17.4	23
机身長 L	mm	55	75	95	115
重量(Weight)	Kg	0.44	0.75	1	1.25

*以上仅为代表性产品，派生产品可根据客户要求制作电气参数、机械尺寸等!

Dimensions(外形图):unit=mm



Wiring Diagram(接线图定义)

电机相线(粗) Phase Line			霍尔电源(细) Hall Pw.		霍尔信号(细) Hall signal		
U	V	W	H+ (Vcc)	H- (Gnd)	Hu	Hv	Hw
黄(YEL)	绿(GRN)	蓝(BLU)	红(RED)	黑(BLK)	黄(YEL)	绿(GRN)	蓝(BLU)

57mm-2 系列永磁直流无刷电动机

57mm Brushless Dc Motor

使用环境 (Environmental conditions)	-20°C ~ 50°C
磁钢材料(Magnet material)	烧结钕铁(Sintered NdfeB)
极数/相数(Number of poles/phase)	4/3
绝缘等级 (Insulation class)	Class B
绝缘电阻 (Insulation resistance)	100MΩmin 500VDC

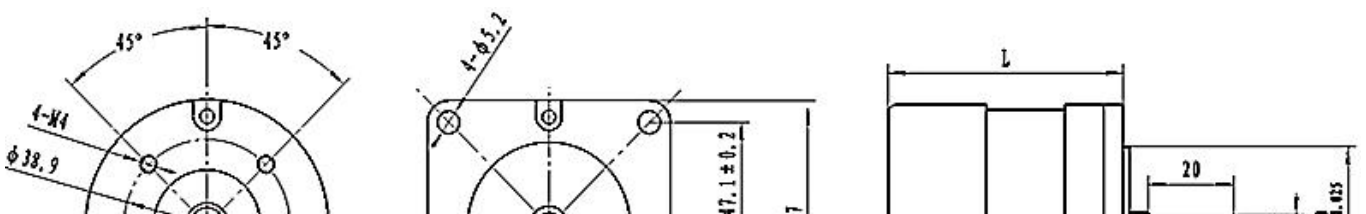


技术参数(Electrical Specifications):

型号 (Model)		57BL55S-230-2	57BL75S-230-2	57BL95S-230-2
极数 (Number of Phases)		4		
电压(voltage)	VDC	24		
额定转速(Rated speed)	rpm	3000		
额定转矩(Rated torque)	N.m	0.2	0.4	0.6
额定电流(Rated current)	Amps.	4	7.5	12
额定功率(Rated power)	Watt.	63	125	188
峰值转矩 (Max torque)	N.m	0.6	1.2	1.8
转矩常数(Torque constant)	N.m/Amps.	0.063	0.064	0.064
反电势常数(Back EMF)	V/Krpm	4.58	4.52	4.54
转子惯量(Rotor inertia)	kg.mm ²	8.5	13.4	21.3
机身长 L	mm	55	75	95
重量(Weight)	Kg	0.48	0.79	1.1

*以上仅为代表性产品，派生产品可根据客户要求制作电气参数、机械尺寸等!

Dimensions(外形图):unit=mm



Wiring Diagram(接线图定义)

电机相线(粗) Phase Line			霍尔电源(细) Hall Pw.		霍尔信号(细) Hall signal		
U	V	W	H+ (Vcc)	H- (Gnd)	Hu	Hv	Hw
黄(YEL)	绿(GRN)	蓝(BLU)	红(RED)	黑(BLK)	黄(YEL)	绿(GRN)	蓝(BLU)

57mm-3 系列永磁直流无刷电动机

57mm Brushless Dc Motor

使用环境 (Environmental conditions)	-20°C ~ 50°C
磁钢材料(Magnet material)	烧结钕铁(Sintered NdfеB)
极数/相数(Number of poles/phase)	8/3
绝缘等级 (Insulation class)	Class B
绝缘电阻 (Insulation resistance)	100MΩmin 500VDC

技术参数(Electrical Specifications):

型号 (Model)	57BLF55S-24(待定)		
极数 (Number of Phases)	8		
电压(voltage)	VDC	24	
额定转速(Rated speed)	rpm	3000	
额定转矩(Rated torque)	N.m		
额定电流(Rated current)	Amps.		
额定功率(Rated power)	Watt.		
峰值转矩 (Max torque)	N.m		
转矩常数(Torque constant)	N.m/Amps.		
反电势常数(Back EMF)	V/Krpm		
转子惯量(Rotor inertia)	kg.mm ²		
机身長 L	mm		
重量(Weight)	Kg		

*以上仅为代表性产品，派生产品可根据客户要求制作电气参数、机械尺寸等!

Dimensions(外形图):unit=mm

Wiring Diagram(接线图定义)

电机相线(粗) Phase Line			霍尔电源(细) Hall Pw.		霍尔信号(细) Hall signal		
U	V	W	H+ (Vcc)	H- (Gnd)	Hu	Hv	Hw
黄(YEL)	绿(GRN)	蓝(BLU)	红(RED)	黑(BLK)	黄(YEL)	绿(GRN)	蓝(BLU)

60mm-1 系列永磁直流无刷电动机

60mm Brushless Dc Motor

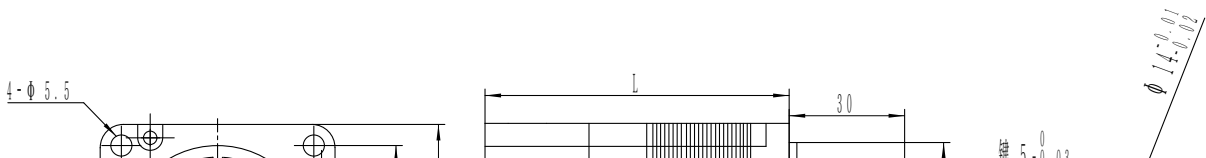
使用环境 (Environmental conditions)	-20°C ~ 50°C
磁钢材料(Magnet material)	烧结钕铁(Sintered NdfeB)
极数/相数(Number of poles/phase)	8/3
绝缘等级 (Insulation class)	Class B
绝缘电阻 (Insulation resistance)	100MΩmin 500VDC



技术参数(Electrical Specifications):

型号 (Model)		60BL78-430-1	60BL99-430-1	60BL120-430-1	60BL141-430-1
极数 (Number of Phases)		8			
电压(voltage)	VDC	48			
额定转速(Rated speed)	rpm	3000			
额定转矩(Rated torque)	N.m	0.32	0.65	0.95	1.27
额定电流(Rated current)	Amps.	3	6	8.8	11.5
额定功率(Rated power)	Watt.	100	200	300	400
峰值转矩 (Max torque)	N.m	0.96	1.95	2.85	3.81
转矩常数(Torque constant)	N.m/Amps.	0.114	0.122	0.126	0.127
反电势常数(Back EMF)	V/Krpm	8.56	8.58	8.5	8.4
转子惯量(Rotor inertia)	kg.mm ²	24	48	72	96
机身长 L	mm	78	99	120	141
重量(Weight)	Kg	0.85	1.25	1.65	2.05

*以上仅为代表性产品，派生产品可根据客户要求制作电气参数、机械尺寸等!



Dimensions(外形图):unit=mm

Wiring Diagram(接线图定义)

电机相线(粗) Phase Line			霍尔电源(细) Hall Pw.		霍尔信号(细) Hall signal		
U	V	W	H+ (Vcc)	H- (Gnd)	Hu	Hv	Hw
黄(YEL)	绿(GRN)	蓝(BLU)	红(RED)	黑(BLK)	黄(YEL)	绿(GRN)	蓝(BLU)

70mm-1 系列永磁直流无刷电动机

70mm Brushless Dc Motor

使用环境 (Environmental conditions)	-20°C ~ 50°C
磁钢材料(Magnet material)	烧结钕铁(Sintered NdfеB)
极数/相数(Number of poles/phase)	8/3
绝缘等级 (Insulation class)	Class B
绝缘电阻 (Insulation resistance)	100MΩmin 500VDC



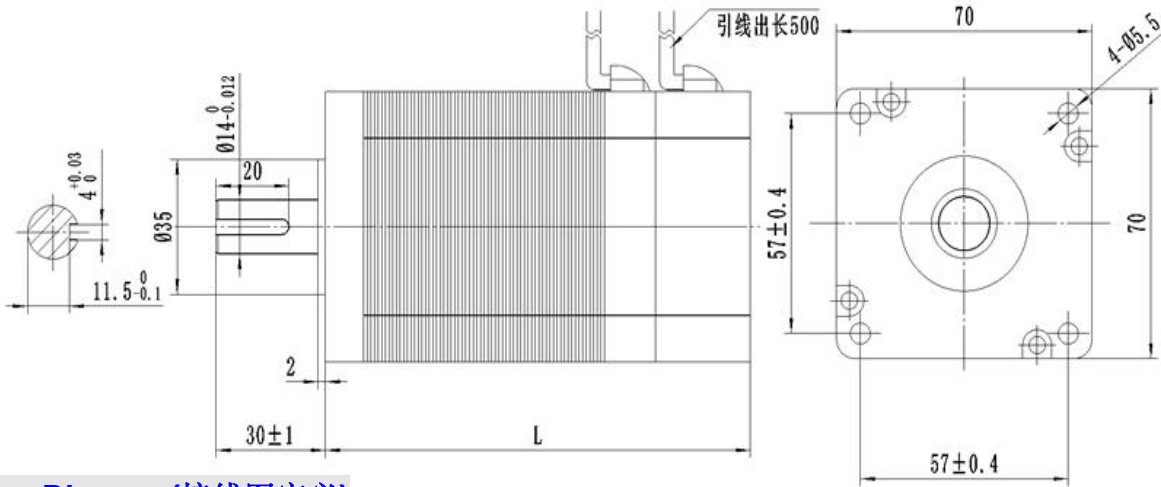
技术参数(Electrical Specifications):

型号 (Model)		70BL86-230-1	70BL86-430-1	70BL116-230-1	70BL116-430-1	70BL146-430-1
极数 (Number of Phases)		8	8	8	8	8
电压(voltage)	VDC	24	48	24	48	48
额定转速(Rated speed)	rpm	3000	3000	3000	3000	3000
额定转矩(Rated torque)	N.m	0.5	0.5	1	1	1.5
额定电流(Rated current)	Amps.	8.8	4.4	17.4	8.8	13.1
额定功率(Rated power)	Watt.	157	157	314	314	471
峰值转矩 (Max torque)	N.m	1.5	1.5	3	3	4.5
转矩常数(Torque constant)	N.m/Amps	0.056	0.115	0.056	0.115	0.115
反电势常数(Back EMF)	V/Krpm	4.6	9.17	4.5	9.1	9.1
转子惯量(Rotor inertia)	kg.mm ²	55	55	110	110	148

机身長 L	mm	86	86	116	116	146
重量(Weight)	Kg	1.3	1.3	2.1	2.1	2.8

*以上仅为代表性产品，派生产品可根据客户要求制作电气参数、机械尺寸等!

Dimensions(外形图):unit=mm



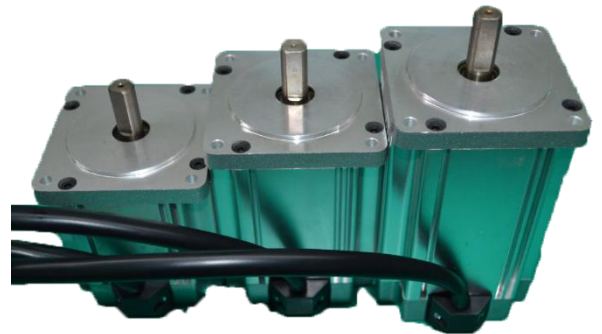
Wiring Diagram(接线图定义)

电机相线(粗) Phase Line			霍尔电源(细) Hall Pw.		霍尔信号(细) Hall signal		
U	V	W	H+ (Vcc)	H- (Gnd)	Hu	Hv	Hw
黄(YEL)	绿(GRN)	蓝(BLU)	红(RED)	黑(BLK)	黄(YEL)	绿(GRN)	蓝(BLU)

80mm-1 系列永磁直流无刷电动机

80mm Brushless Dc Motor

使用环境 (Environmental conditions)	-20°C ~ 50°C
磁钢材料(Magnet material)	烧结钕铁(Sintered NdFeB)
极数/相数(Number of poles/phase)	4/3
绝缘等级 (Insulation class)	Class B
绝缘电阻 (Insulation resistance)	100MΩmin 500VDC



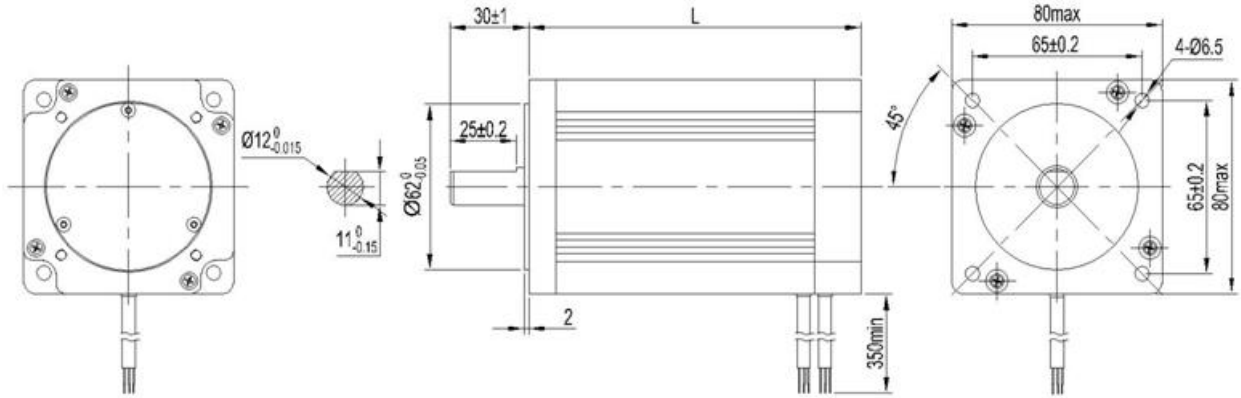
技术参数(Electrical Specifications):

型号 (Model)		80BL86-430-1	80BL106-430-1	80BL106-660-1	80BL126-430-1	80BL126-450-1	80BL126-630-1
极数 (Number of Phases)		4	4	4	4	4	4
电压(voltage)	VDC	48	48	310	48	48	310
额定转速(Rated speed)	rpm	3000	3000	6000	3000	5000	3000
额定转矩(Rated torque)	N.m	0.4	0.7	0.7	1.27	1.27	1.27
额定电流(Rated current)	Amps.	3.2	5.5	1.7	10	17	1.6
额定功率(Rated power)	Watt.	126	220	440	400	665	400
峰值转矩 (Max torque)	N.m	1.2	2.1	2.1	3.81	3.81	3.81

转矩常数(Torque constant)	N.m/Amps.	0.126	0.127	0.4	0.127	0.076	0.82
反电势常数(Back EMF)	V/Krpm	9.1	9	31	8.7	5.1	55
转子惯量(Rotor inertia)	kg.mm ²	39	53	53	65	65	65
机身长 L	mm	86	106	106	126	126	126
重量(Weight)	Kg	1.5	2.1	2.1	2.7	2.7	2.7

*以上仅为代表性产品，派生产品可根据客户要求制作电气参数、机械尺寸等!

Dimensions(外形图):unit=mm



Wiring Diagram(接线图定义)

电机相线(粗) Phase Line			霍尔电源(细) Hall Pw.		霍尔信号(细) Hall signal		
U	V	W	H+ (Vcc)	H- (Gnd)	Hu	Hv	Hw
黄(YEL)	绿(GRN)	蓝(BLU)	红(RED)	黑(BLK)	黄(YEL)	绿(GRN)	蓝(BLU)

80mm-2 系列永磁直流无刷电动机

80mm Brushless Dc Motor

使用环境 (Environmental conditions)	-20°C ~ 50°C
磁钢材料(Magnet material)	烧结钕铁(Sintered NdfеB)
极数/相数(Number of poles/phase)	4/3
绝缘等级 (Insulation class)	Class B
绝缘电阻 (Insulation resistance)	100MΩmin 500VDC



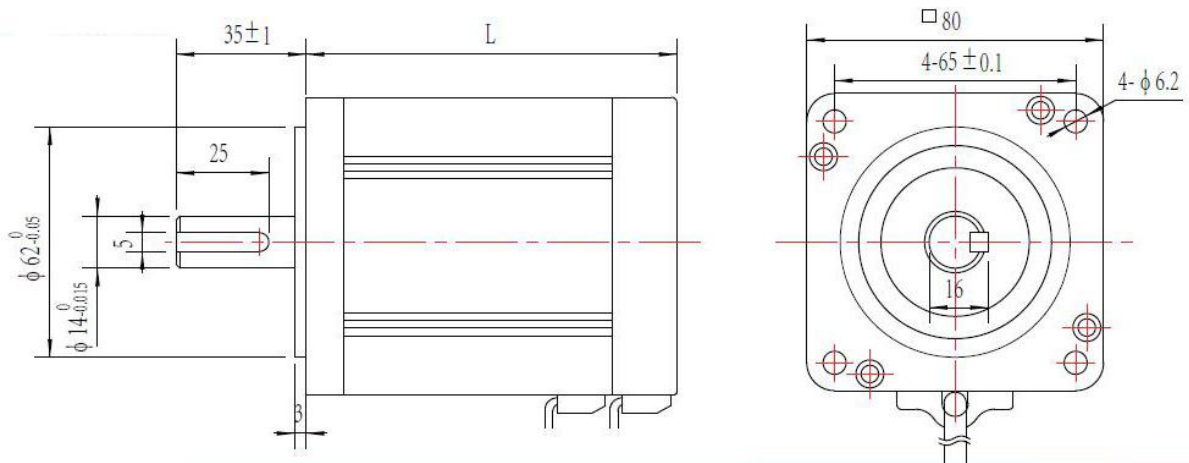
技术参数(Electrical Specifications):

型号 (Model)		80BL100S-430-2	80BL100S-445-2	80BL110S-430-2	80BL110S-445-2	80BL115S-630-2	80BL130S-630-2	80BL130S-615-2
极数 (Number of Phases)		4	4	4	4	4	4	4
电压(voltage)	DCV	48	48	48	48	310	310	310
额定转速(Rated speed)	rpm	3000	4500	3000	4500	3000	3000	1500
额定转矩(Rated torque)	N.m	1.27	0.85	1.6	1.06	1.75	2.38	3.5
额定电流(Rated current)	Amps.	11	11	14	13.5	2.3	3.2	2.4

额定功率(Rated power)	Watt.	400	400	500	500	550	750	550
峰值扭矩 (Max torque)	N.m	3.81	2.55	4.8	3.18	5.25	7.14	10.5
转矩常数(Torque constant)	N.m/Amps	0.115	0.077	0.114	0.078	0.76	0.74	1.45
反电势常数(Back EMF)	V/Krpm	8.4	5.6	8.4	5.6	55	55	95
转子惯量(Rotor inertia)	kg.mm ²	53	53	66	66	73	99	99
机身長 L	mm	100	100	110	110	110	130	130
重量(Weight)	Kg	2.1	2.1	2.6	2.6	2.7	3.3	3.3

*以上仅为代表性产品，派生产品可根据客户要求制作电气参数、机械尺寸等!

Dimensions(外形图):unit=mm



Wiring Diagram(接线图定义)

电机相线(粗) Phase Line			霍尔电源(细) Hall Pw.		霍尔信号(细) Hall signal		
U	V	W	H+ (Vcc)	H- (Gnd)	Hu	Hv	Hw
黄(YEL)	绿(GRN)	蓝(BLU)	红(RED)	黑(BLK)	黄(YEL)	绿(GRN)	蓝(BLU)

80mm-3 系列永磁直流无刷电动机

80mm Brushless Dc Motor

使用环境 (Environmental conditions)	-20°C ~ 50°C
磁钢材料(Magnet material)	烧结钕铁(Sintered NdfB)
极数/相数(Number of poles/phase)	4/3
绝缘等级 (Insulation class)	Class B
绝缘电阻 (Insulation resistance)	100MΩmin 500VDC

技术参数(Electrical Specifications):

型号 (Model)		80BL			
极数 (Number of Phases)		4	4	4	4
电压(voltage)	VDC	24	48	24	48
额定转速(Rated speed)	rpm	3000	3000	3000	3000

额定转矩(Rated torque)	N.m	0.64	0.64	1.27	1.27
额定电流(Rated current)	Amps.		4.1		11
额定功率(Rated power)	Watt.	200	200	400	400
峰值转矩 (Max torque)	N.m	2.3	2.3	3.81	3.81
转矩常数(Torque constant)	N.m/Amps.		0.11		0.115
反电势常数(Back EMF)	V/Krpm				8.4
转子惯量(Rotor inertia)	kg.mm ²	39	39	53	53
机身長 L	mm				
重量(Weight)	Kg				

*以上仅为代表性产品，派生产品可根据客户要求制作电气参数、机械尺寸等!

Dimensions(外形图):unit=mm

Wiring Diagram(接线图定义)

电机相线(粗) Phase Line			霍尔电源(细) Hall Pw.		霍尔信号(细) Hall signal		
U	V	W	H+ (Vcc)	H- (Gnd)	Hu	Hv	Hw
黄(YEL)	绿(GRN)	蓝(BLU)	红(RED)	黑(BLK)	黄(YEL)	绿(GRN)	蓝(BLU)

80mm-4 系列永磁直流无刷电动机

80mm Brushless Dc Motor

使用环境 (Environmental conditions)	-20°C ~ 50°C
磁钢材料(Magnet material)	烧结钕铁(Sintered NdfеB)
极数/相数(Number of poles/phase)	4/3
绝缘等级 (Insulation class)	Class B
绝缘电阻 (Insulation resistance)	100MΩmin 500VDC

技术参数(Electrical Specifications):

型号 (Model)	加风叶的					
极数 (Number of Phases)						

电压(voltage)	VDC						
额定转速(Rated speed)	rpm						
额定转矩(Rated torque)	N.m						
额定电流(Rated current)	Amps.						
额定功率(Rated power)	Watt.						
峰值扭矩 (Max torque)	N.m						
转矩常数(Torque constant)	N.m/Amps.						
反电势常数(Back EMF)	V/Krpm						
转子惯量(Rotor inertia)	kg.mm ²						
机身長 L	mm						
重量(Weight)	Kg						

*以上仅为代表性产品，派生产品可根据客户要求制作电气参数、机械尺寸等!

Dimensions(外形图):unit=mm

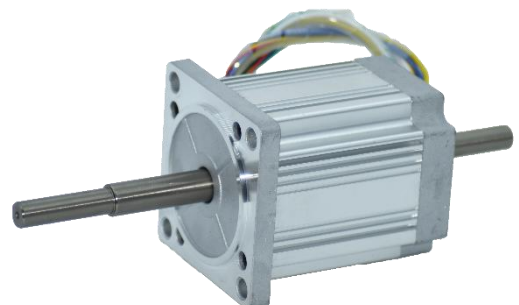
Wiring Diagram(接线图定义)

电机相线(粗) Phase Line			霍尔电源(细) Hall Pw.		霍尔信号(细) Hall signal		
U	V	W	H+ (Vcc)	H- (Gnd)	Hu	Hv	Hw
黄(YEL)	绿(GRN)	蓝(BLU)	红(RED)	黑(BLK)	黄(YEL)	绿(GRN)	蓝(BLU)

80mm-5 系列永磁直流无刷电动机

80mm Brushless Dc Motor

使用环境 (Environmental conditions)	-20°C ~ 50°C
磁钢材料(Magnet material)	烧结钕铁(Sintered NdfeB)
极数/相数(Number of poles/phase)	4/3
绝缘等级 (Insulation class)	Class B
绝缘电阻 (Insulation resistance)	100MΩmin 500VDC

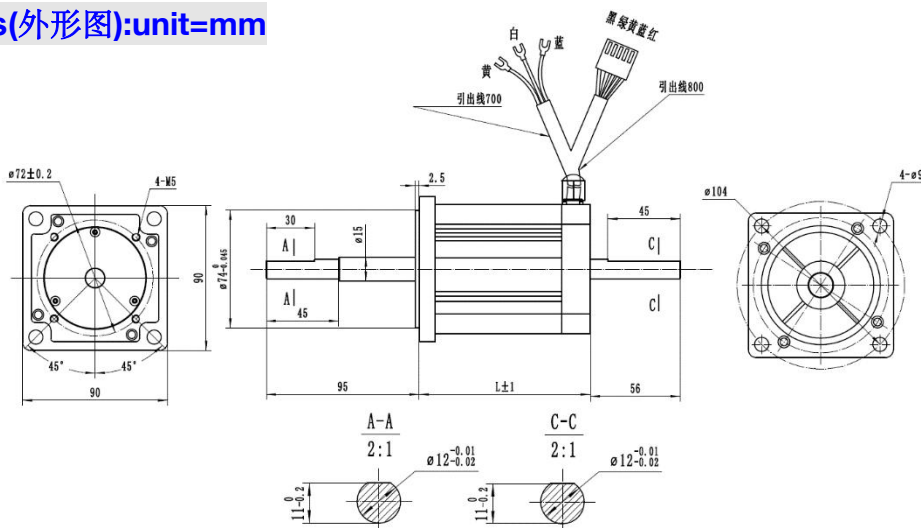


技术参数(Electrical Specifications):

型号 (Model)		80BL106-660-75-5	80BL106-660-94-5	80BL126-660-94-5	80BL136-630-94-5
极数 (Number of Phases)		4	4	4	4
电压 (voltage)	VDC	310	310	310	310
额定转速(Rated speed)	rpm	6000	6000	6000	3000
额定转矩(Rated torque)	N.m	0.65	0.65	0.955	1.9
额定电流(Rated current)	Amps.	1.55	1.55	2.4	2.4
额定功率(Rated power)	Watt.	400	400	600	600
峰值扭矩 (Max torque)	N.m	1.95	1.95	2.865	5.7
转矩常数(Torque constant)	N.m/Amps.	0.41	0.41	0.4	0.8
反电势常数(Back EMF)	V/Krpm	33	33	32	55
转子惯量(Rotor inertia)	kg.mm ²	53	53	60	65
机身長 L	mm	106	106	126	136
重量(Weight)	Kg	2.1	2.1	2.7	2.9

*以上仅为代表性产品，派生产品可根据客户要求制作电气参数、机械尺寸等!

Dimensions(外形图):unit=mm



Wiring Diagram(接线图定义)

电机相线(粗) Phase Line			霍尔电源(细) Hall Pw.		霍尔信号(细) Hall signal		
U	V	W	H+ (Vcc)	H- (Gnd)	Hu	Hv	Hw
蓝(BLU)	绿(GRN)	黄(YEL)	红(RED)	黑(BLK)	蓝(BLU)	绿(GRN)	黄(YEL)

80mm-5 系列永磁直流无刷电动机

80mm Brushless Dc Motor

使用环境 (Environmental conditions)	-20°C ~ 50°C
磁钢材料 (Magnet material)	烧结钕铁(Sintered NdFeB)
极数/相数 (Number of poles/phase)	4/3
绝缘等级 (Insulation class)	Class B
绝缘电阻 (Insulation resistance)	100MΩmin 500VDC



技术参数(Electrical Specifications):

型号 (Model)		80BL106-660-74S-5	80BL126-660-94S-5
极数 (Number of Phases)		4	4
电压 (voltage)	VDC	310	310
额定转速(Rated speed)	rpm	6000	6000
额定转矩(Rated torque)	N.m	0.65	0.955
额定电流(Rated current)	Amps.	1.55	2.4
额定功率(Rated power)	Watt.	400	600
峰值转矩 (Max torque)	N.m	1.95	2.865
转矩常数(Torque constant)	N.m/Amps.	0.41	0.4
反电势常数(Back EMF)	V/Krpm	33	32
转子惯量(Rotor inertia)	kg.mm ²	53	60
机身长 L	mm	106	126
重量(Weight)	Kg	2.1	2.7

*以上仅为代表性产品，派生产品可根据客户要求制作电气参数、机械尺寸等!

Dimensions(外形图):unit=mm

Wiring Diagram(接线图定义)

电机相线(粗) Phase Line			霍尔电源(细) Hall Pw.		霍尔信号(细) Hall signal		
U	V	W	H+ (Vcc)	H- (Gnd)	Hu	Hv	Hw
蓝(BLU)	绿(GRN)	黄(YEL)	红(RED)	黑(BLK)	蓝(BLU)	绿(GRN)	黄(YEL)

86mm-1 系列永磁直流无刷电动机

86mm Brushless Dc Motor

使用环境 (Environmental conditions)	-20°C ~ 50°C
磁钢材料(Magnet material)	烧结钕铁(Sintered NdfeB)



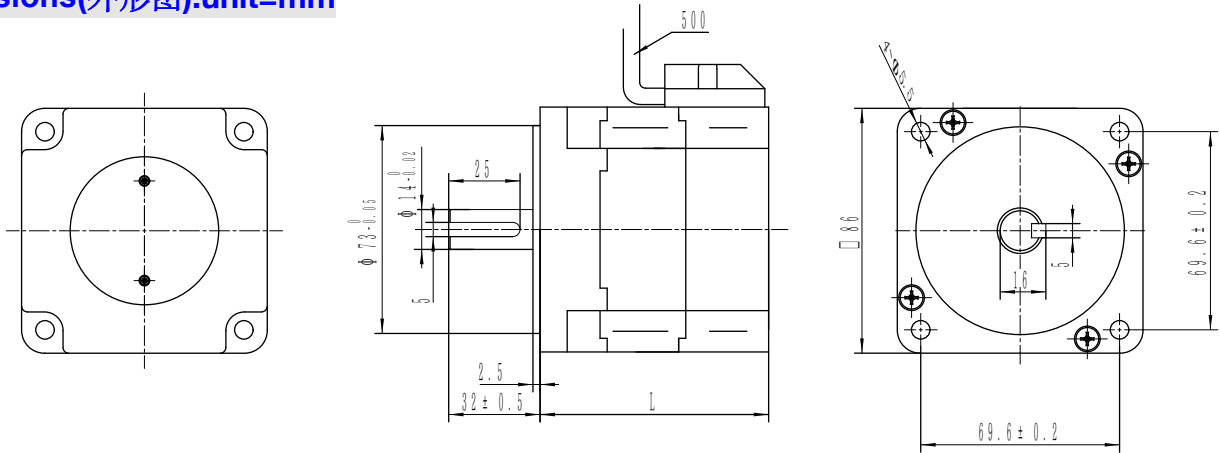
极数/相数(Number of poles/phase)	8/3
绝缘等级 (Insulation class)	Class B
绝缘电阻 (Insulation resistance)	100MΩmin 500VDC

技术参数(Electrical Specifications):

型号 (Model)		86BL80-430-1	86BL90-430-1	86BL105-430-1	86BL115-430-1	86BL130-430-1	86BL130-630-1
极数 (Number of Phases)		4/8	4/8	4/8	4/8	4/8	4/8
电压 (voltage)	VDC	48	48	48	48	48	310
额定转速(Rated speed)	rpm	3000	3000	3000	3000	3000	3000
额定转矩(Rated torque)	N.m	1	1.27	1.8	2.1	2.5	2.5
额定电流(Rated current)	Amps.	8.5	10.8	14.8	18	19.5	3.3
额定功率(Rated power)	Watt.	314	400	565	659	785	785
峰值扭矩 (Max torque)	N.m	3	3.81	5.4	6.3	7.5	7.5
转矩常数(Torque constant)	N.m/Amps.	0.133	0.133	0.133	0.133	0.138	0.8
反电势常数(Back EMF)	V/Krpm	9.8	9.8	9.8	9.7	10.2	62
转子惯量(Rotor inertia)	kg.mm ²	120	160	220	260	320	320
机身长 L	mm	80	90	105	115	130	130
重量(Weight)	Kg	2.2	2.6	3.4	3.8	4.3	4.3

*以上仅为代表性产品，派生产品可根据客户要求制作电气参数、机械尺寸等!

Dimensions(外形图):unit=mm



Wiring Diagram(接线图定义)

电机相线(粗) Phase Line			霍尔电源(细) Hall Pw.		霍尔信号(细) Hall signal		
U	V	W	H+ (Vcc)	H- (Gnd)	Hu	Hv	Hw
黄(YEL)	绿(GRN)	蓝(BLU)	红(RED)	黑(BLK)	黄(YEL)	绿(GRN)	蓝(BLU)

86mm-2 系列永磁直流无刷电动机

86mm Brushless Dc Motor

使用环境 (Environmental conditions)	-20°C ~ 50°C
磁钢材料(Magnet material)	烧结钕铁(Sintered NdfеB)
极数/相数(Number of poles/phase)	8/3
绝缘等级 (Insulation class)	Class B
绝缘电阻 (Insulation resistance)	100MΩmin 500VDC

技术参数(Electrical Specifications):

型号 (Model)		86BL					
极数 (Number of Phases)		8	8	8	8	8	8
电压(voltage)	VDC						
额定转速(Rated speed)	rpm	3000	3000	3000	3000	3000	3000
额定转矩(Rated torque)	N.m						
额定电流(Rated current)	Amps.						
额定功率(Rated power)	Watt.						
峰值转距 (Max torque)	N.m						
转矩常数(Torque constant)	N.m/Amps.						
反电势常数(Back EMF)	V/Krpm						
转子惯量(Rotor inertia)	kg.mm ²						
机身長 L	mm						
重量(Weight)	Kg						

*以上仅为代表性产品，派生产品可根据客户要求制作电气参数、机械尺寸等!

Dimensions(外形图):unit=mm

Wiring Diagram(接线图定义)

电机相线(粗) Phase Line			霍尔电源(细) Hall Pw.		霍尔信号(细) Hall signal		
U	V	W	H+ (Vcc)	H- (Gnd)	Hu	Hv	Hw
黄(YEL)	绿(GRN)	蓝(BLU)	红(RED)	黑(BLK)	黄(YEL)	绿(GRN)	蓝(BLU)

90mm-1 系列永磁直流无刷电动机

90mm Brushless Dc Motor

使用环境 (Environmental conditions)	-20°C ~ 50°C
磁钢材料(Magnet material)	烧结钕铁(Sintered NdfеB)
极数/相数(Number of poles/phase)	8/3
绝缘等级 (Insulation class)	Class B
绝缘电阻 (Insulation resistance)	100MΩmin 500VDC

技术参数(Electrical Specifications):

型号 (Model)		90BL54-230-1	90BL64-230-1	90BL84-430-1	90BL99-430-1	90BL124-430-1	90BLF124-63-1
极数 (Number of Phases)		8	8	8	8	8	8
电压(voltage)	VDC	24	24	48	48	48	310
额定转速(Rated speed)	rpm	3000	3000	3000	3000	3000	3000
额定转矩(Rated torque)	N.m	0.32	0.65	1.27	1.8	2.5	2.5
额定电流(Rated current)	Amps.	5.5	11	11	14.8	19.5	3.3
额定功率(Rated power)	Watt.	100	200	400	565	785	785
峰值转矩 (Max torque)	N.m	0.96	1.95	3.81	5.4	7.5	7.5
转矩常数(Torque constant)	N.m/Amps.	0.063	0.063	0.133	0.133	0.138	0.8
反电势常数(Back EMF)	V/Krpm	9.8	9.8	9.8	9.7	10.2	62
转子惯量(Rotor inertia)	kg.mm ²	40	80	160	220	320	320
机身长 L	mm	87	97	112	122	137	137
重量(Weight)	Kg	0.9	1.6	2.4	3.2	4.1	4.1

*以上仅为代表性产品，派生产品可根据客户要求制作电气参数、机械尺寸等!

Dimensions(外形图):unit=mm

Wiring Diagram(接线图定义)

电机相线(粗) Phase Line			霍尔电源(细) Hall Pw.		霍尔信号(细) Hall signal		
U	V	W	H+ (Vcc)	H- (Gnd)	Hu	Hv	Hw

黄(YEL)	绿(GRN)	蓝(BLU)	红(RED)	黑(BLK)	黄(YEL)	绿(GRN)	蓝(BLU)
--------	--------	--------	--------	--------	--------	--------	--------

110mm-1 系列永磁直流无刷电动机

110mm Brushless Dc Motor

使用环境 (Environmental conditions)	-20°C ~ 50°C
磁钢材料(Magnet material)	烧结钕铁(Sintered NdfеB)
极数/相数(Number of poles/phase)	8/3
绝缘等级 (Insulation class)	Class B
绝缘电阻 (Insulation resistance)	100MΩmin 500VDC

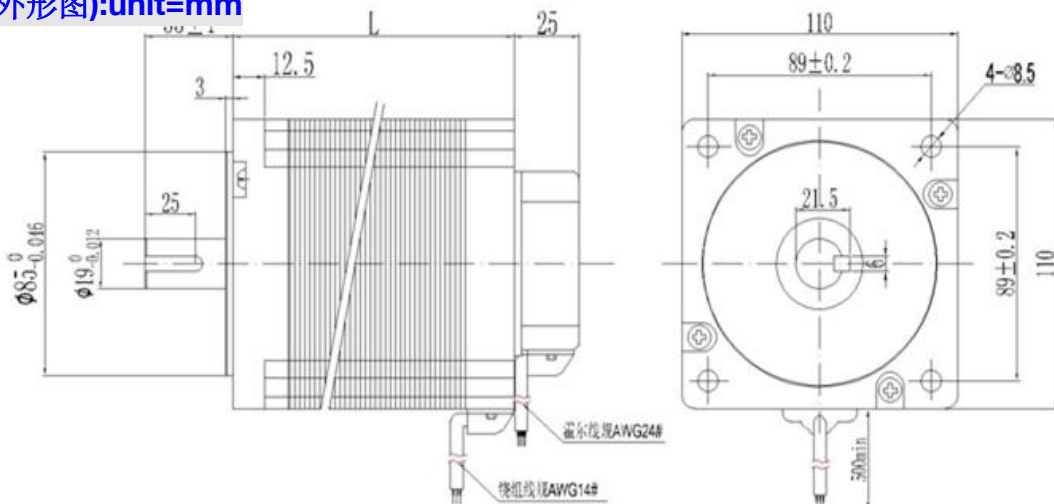


技术参数(Electrical Specifications):

型号 (Model)		110BL110-430	110BLF110-630	110BL140-430	110BL140-630	110BL170-630	110BL230-630
极数 (Number of Phases)		8	8	8	8	8	8
电压(voltage)	VDC	48	310	48	310	310	310
额定转速(Rated speed)	rpm	3000	3000	3000	3000	3000	3000
额定转矩(Rated torque)	N.m	3.2	3.2	4.8	4.8	6.4	9.6
额定电流(Rated current)	Amps.	28	4.2	42	6.3	8.4	12.6
额定功率(Rated power)	Watt.	1000	1000	1500	1500	2000	3000
峰值扭矩 (Max torque)	N.m	9.6	9.6	14.4	14.4	19.2	28.8
转矩常数(Torque constant)	N.m/Amps.	0.12	0.79	0.12	0.79	0.79	0.76
反电势常数(Back EMF)	V/Krpm	8.4	55	8.5	55	55	55
转子惯量(Rotor inertia)	Kg.mm ²	730	730	1100	1100	1460	2200
机身長 L	mm	110	110	140	140	170	230
重量(Weight)	Kg	4.5	4.5	5	5	7	9

*以上仅为代表性产品，派生产品可根据客户要求制作电气参数、机械尺寸等!

Dimensions(外形图):unit=mm



Wiring Diagram(接线图定义)

电机相线(粗) Phase Line			霍尔电源(细) Hall Pw.		霍尔信号(细) Hall signal		
U	V	W	H+ (Vcc)	H- (Gnd)	Hu	Hv	Hw
黄(YEL)	绿(GRN)	蓝(BLU)	红(RED)	黑(BLK)	黄(YEL)	绿(GRN)	蓝(BLU)

110mm-2 系列永磁直流无刷电动机

110mm Brushless Dc Motor

使用环境 (Environmental conditions)	-20°C ~ 50°C
磁钢材料(Magnet material)	烧结钕铁(Sintered NdfеB)
数/相数(Number of poles/phase)	8/3
绝缘等级 (Insulation class)	Class B
绝缘电阻 (Insulation resistance)	100MΩmin 500VDC

技术参数(Electrical Specifications):

型号 (Model)							
极数 (Number of Phases)							
电压(voltage)	VDC						
额定转速(Rated speed)	rpm						
额定转矩(Rated torque)	N.m						
额定电流(Rated current)	Amps.						
额定功率(Rated power)	Watt.						
峰值转矩 (Max torque)	N.m						
转矩常数(Torque constant)	N.m/Amps.						
反电势常数(Back EMF)	V/Krpm						
转子惯量(Rotor inertia)	Kg.mm ²						
机身長 L	mm						
重量(Weight)	Kg						

*以上仅为代表性产品，派生产品可根据客户要求制作电气参数、机械尺寸等!

Dimensions(外形图):unit=mm

Wiring Diagram(接线图定义)

电机相线(粗) Phase Line			霍尔电源(细) Hall Pw.		霍尔信号(细) Hall signal		
U	V	W	H+ (Vcc)	H- (Gnd)	Hu	Hv	Hw
黄(YEL)	绿(GRN)	蓝(BLU)	红(RED)	黑(BLK)	黄(YEL)	绿(GRN)	蓝(BLU)

130 mm-1 系列永磁直流无刷电动机

130mm Brushless Dc Motor

使用环境 (Environmental conditions)	-20°C ~ 50°C
磁钢材料(Magnet material)	烧结钕铁(Sintered NdfеB)
数/相数(Number of poles/phase)	8/3
绝缘等级 (Insulation class)	Class B
绝缘电阻 (Insulation resistance)	100MΩmin 500VDC

技术参数(Electrical Specifications):

型号 (Model)							
极数 (Number of Phases)							
电压(voltage)	VDC						
额定转速(Rated speed)	rpm						
额定转矩(Rated torque)	N.m						
额定电流(Rated current)	Amps.						
额定功率(Rated power)	Watt.						
峰值转距 (Max torque)	N.m						
转矩常数(Torque constant)	N.m/Amps.						
反电势常数(Back EMF)	V/Krpm						
转子惯量(Rotor inertia)	Kg.mm ²						
机身長 L	mm						
重量(Weight)	Kg						

*以上仅为代表性产品，派生产品可根据客户要求制作电气参数、机械尺寸等!

Dimensions(外形图):unit=mm

Wiring Diagram(接线图定义)

电机相线(粗) Phase Line			霍尔电源(细) Hall Pw.		霍尔信号(细) Hall signal		
U	V	W	H+ (Vcc)	H- (Gnd)	Hu	Hv	Hw
黄(YEL)	绿(GRN)	蓝(BLU)	红(RED)	黑(BLK)	黄(YEL)	绿(GRN)	蓝(BLU)

150mm-1 系列永磁直流无刷电动机

150 mm Brushless Dc Motor

使用环境 (Environmental conditions)	-20°C ~ 50°C
磁钢材料(Magnet material)	烧结钕铁(Sintered NdfеB)
数/相数(Number of poles/phase)	8/3
绝缘等级 (Insulation class)	Class B
绝缘电阻 (Insulation resistance)	100MΩmin 500VDC

技术参数(Electrical Specifications):

型号 (Model)							
极数 (Number of Phases)							
电压(voltage)	VDC						
额定转速(Rated speed)	rpm						
额定转矩(Rated torque)	N.m						
额定电流(Rated current)	Amps.						
额定功率(Rated power)	Watt.						
峰值转矩 (Max torque)	N.m						
转矩常数(Torque constant)	N.m/Amps.						
反电势常数(Back EMF)	V/Krpm						
转子惯量(Rotor inertia)	Kg.mm ²						
机身長 L	mm						
重量(Weight)	Kg						

*以上仅为代表性产品，派生产品可根据客户要求制作电气参数、机械尺寸等!

Dimensions(外形图):unit=mm

Wiring Diagram(接线图定义)

电机相线(粗) Phase Line			霍尔电源(细) Hall Pw.		霍尔信号(细) Hall signal		
U	V	W	H+ (Vcc)	H- (Gnd)	Hu	Hv	Hw
黄(YEL)	绿(GRN)	蓝(BLU)	红(RED)	黑(BLK)	黄(YEL)	绿(GRN)	蓝(BLU)

180mm-1 系列永磁直流无刷电动机

180 mm Brushless Dc Motor

使用环境 (Environmental conditions)	-20°C ~ 50°C
磁钢材料(Magnet material)	烧结钕铁(Sintered NdfB)
数/相数(Number of poles/phase)	8/3
绝缘等级 (Insulation class)	Class B
绝缘电阻 (Insulation resistance)	100MΩmin 500VDC

技术参数(Electrical Specifications):

型号 (Model)							
极数 (Number of Phases)							
电压(voltage)	VDC						
额定转速(Rated speed)	rpm						
额定转矩(Rated torque)	N.m						
额定电流(Rated current)	Amps.						
额定功率(Rated power)	Watt.						
峰值转距 (Max torque)	N.m						
转矩常数(Torque constant)	N.m/Amps.						
反电势常数(Back EMF)	V/Krpm						
转子惯量(Rotor inertia)	Kg.mm ²						
机身長 L	mm						
重量(Weight)	Kg						

*以上仅为代表性产品，派生产品可根据客户要求制作电气参数、机械尺寸等!

Dimensions(外形图):unit=mm

Wiring Diagram(接线图定义)

电机相线(粗) Phase Line			霍尔电源(细) Hall Pw.		霍尔信号(细) Hall signal		
U	V	W	H+ (Vcc)	H- (Gnd)	Hu	Hv	Hw
黄(YEL)	绿(GRN)	蓝(BLU)	红(RED)	黑(BLK)	黄(YEL)	绿(GRN)	蓝(BLU)